



# ***SOFIA'S PATH TO SUSTAINABILITY***

**IMPROVING MOBILITY**

Rakovska Street



# ***THE EUROPEAN GREEN CAPITAL AWARD***



# ***THE METRO = SOFIA'S BIGGEST PROJECT***



**NEXT YEAR, OVER 90% OF ALL CITY BUSES WILL  
BE EURO 6 STANDARD**

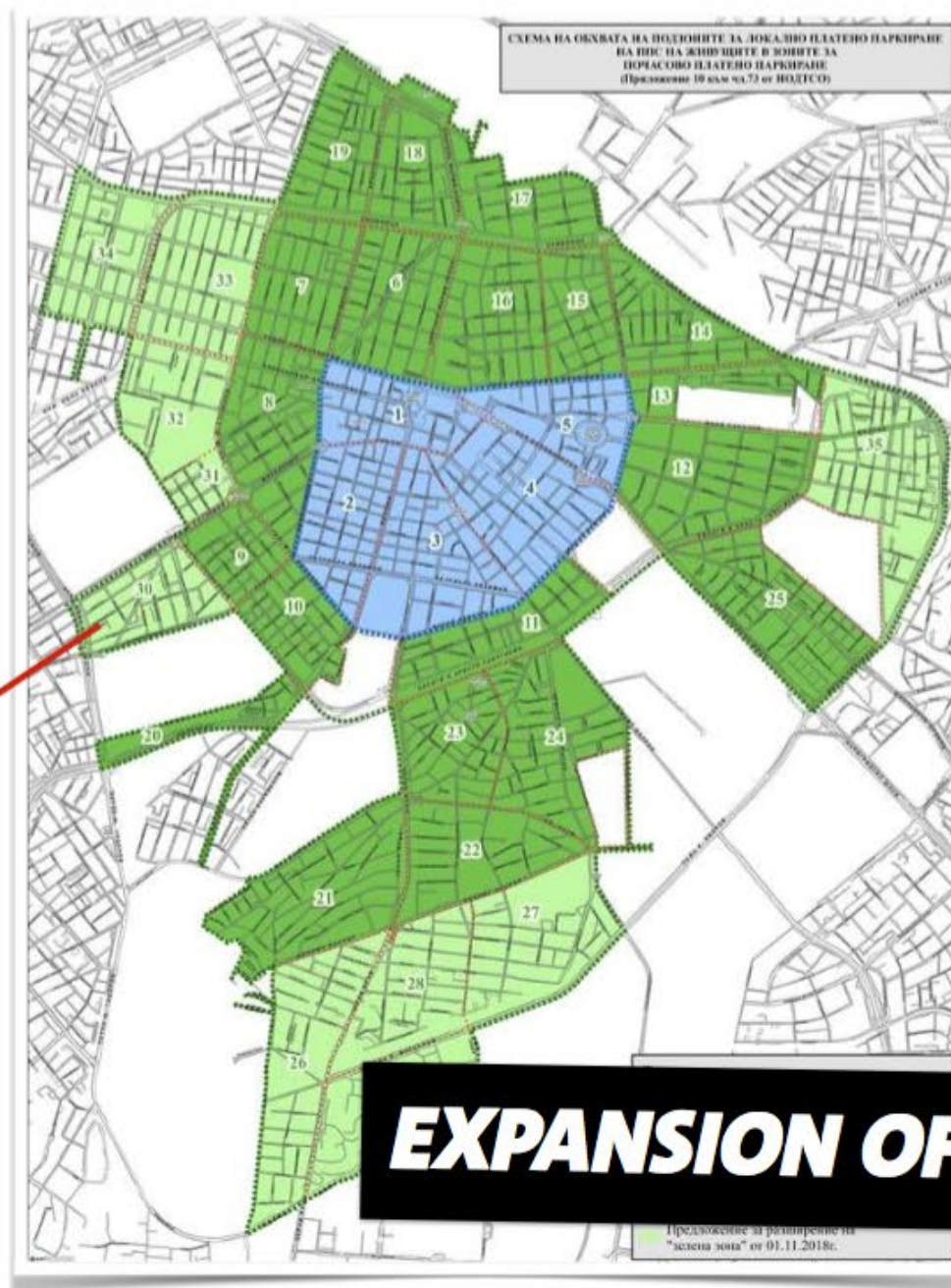
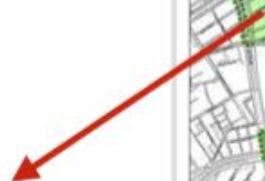






**From 1 November:**

Additional 5500  
regulated parking  
spots



**EXPANSION OF PARKING ZONES**

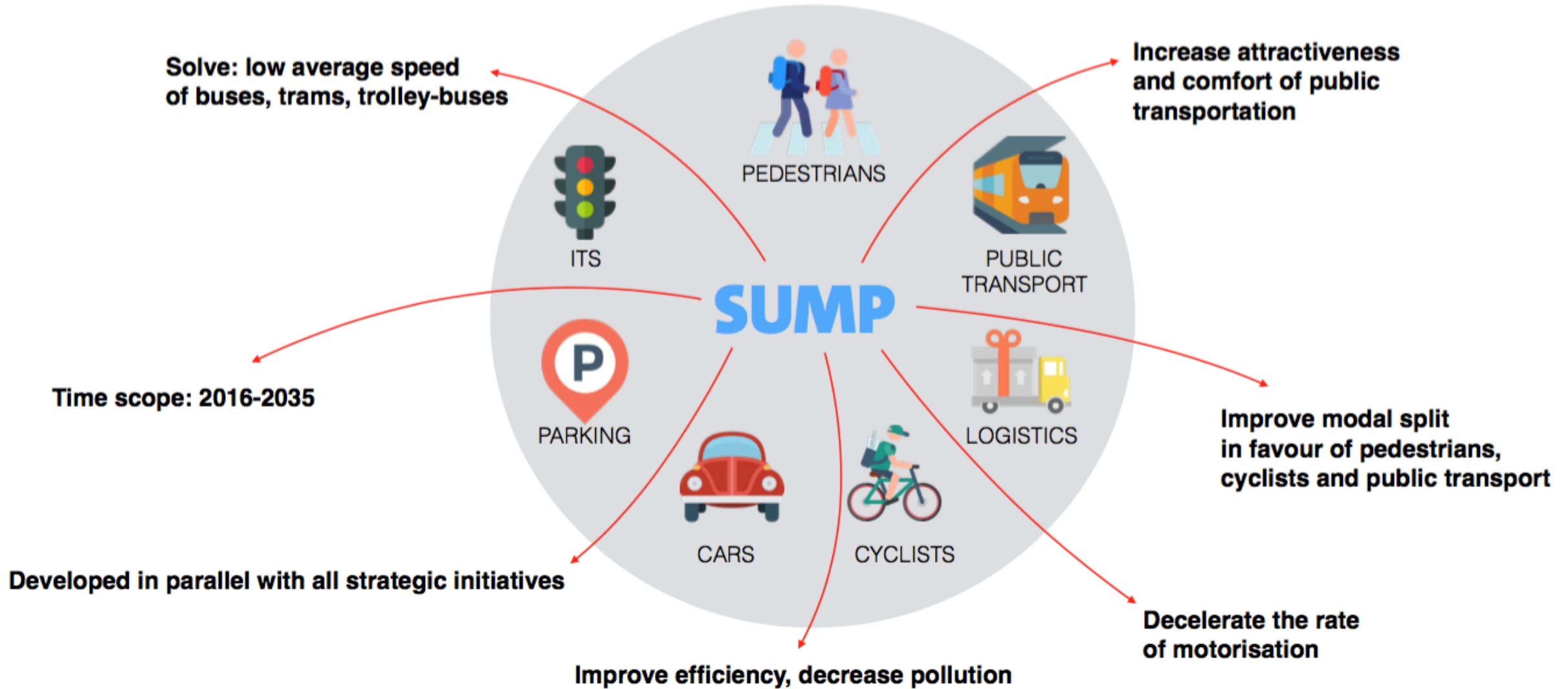
# ***ELECTRIC CAR SHARING***



**110  
CARS**

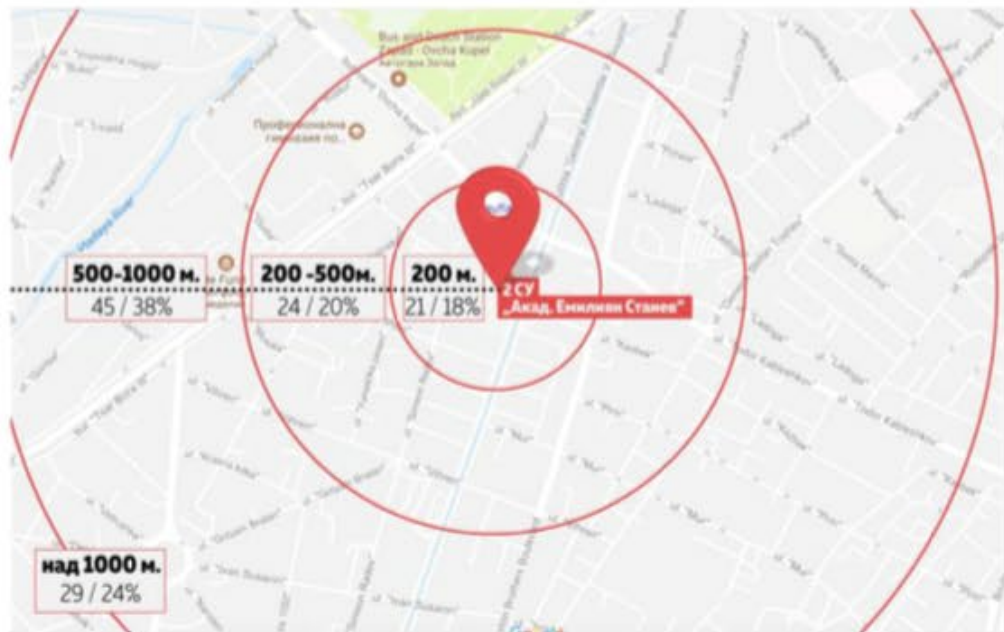


# **SUSTAINABLE URBAN MOBILITY PLAN**

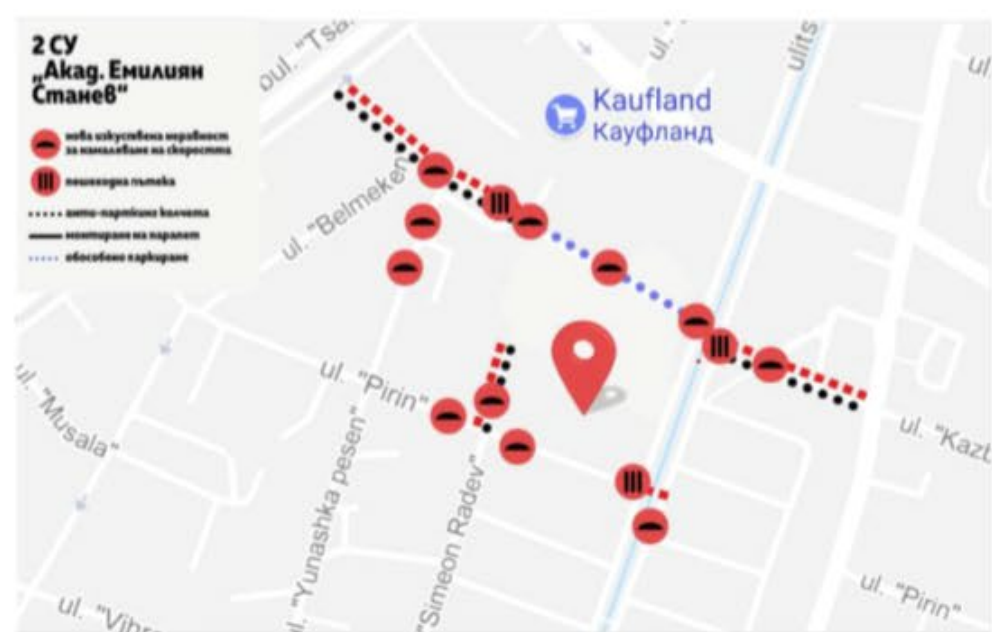




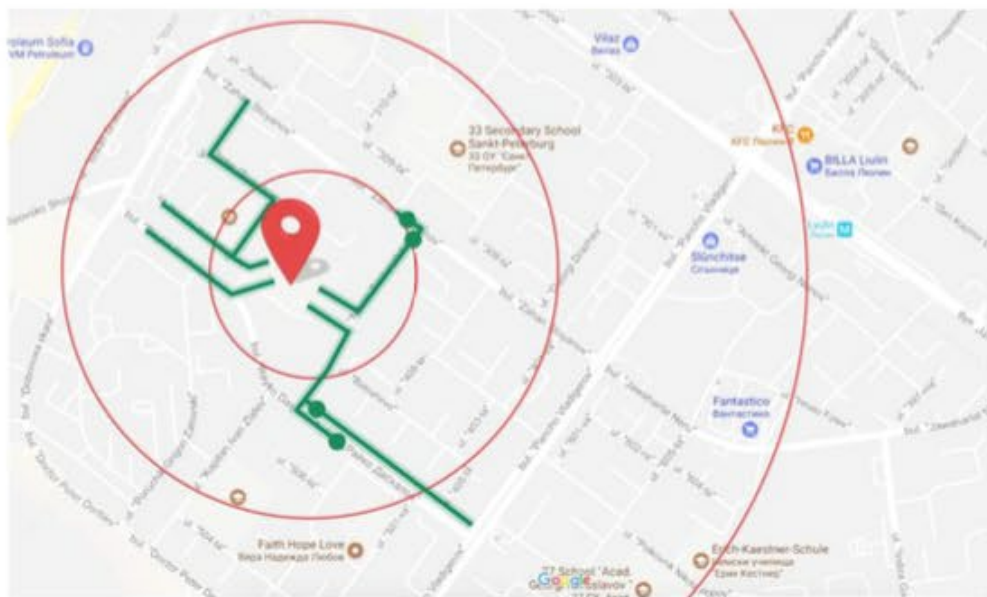
ИСКАМ  
ПЕША!



ИСКАМ  
ПЕША!



3

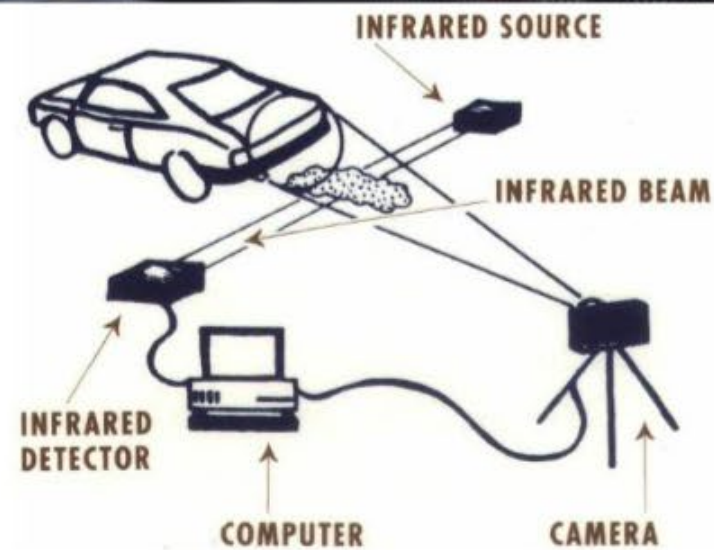


4





# REMOTE MEASUREMENTS OF CAR EMISSIONS



**“WE MUST PREVENT THE MIGRATION OF  
DIESEL VEHICLES FROM THE WEST TO THE EAST”**

*- The Bulgarian Minister of Environment*

An initiative supported by 8 EU Member States





# ANALYSING THE MOBILITY HABITS OF WORKERS

## Findings:



The car is the most popular way of getting to work



In most cases, there is only a single passenger in each car



Walking and cycling are not preferred at all



The most preferred type of public transport is the metro



Our aim is to partner with employers and encourage workers to travel together

*the offices of some of the biggest employers in the city are located in difficult-to-get-to places*





# LIFE: GLOBAL SYSTEM FOR TRAFFIC EMISSION MANAGEMENT

## CHALLENGE



Reduce traffic emissions

10% of the **highest polluting vehicles** are responsible for **50%** of the **emissions** caused by traffic

Traffic contributes with **60%** of total emissions in major cities

Pollutants as **CO, CO<sub>2</sub>, HC, NO<sub>x</sub>, NO** and **NO<sub>2</sub>**, besides particulate matter (**PM**), are the main responsible for bad air quality



## RSD+ Development

Newly remote sensing device development:

- Allows monitoring main exhaust gases, included **NO<sub>2</sub>**
- Non-intrusive measurements
- Accurate
- Working on real driving conditions

Strict tests for device validation

## DEMONSTRATIONS

MADRID  
Public

2 RSD+ will monitor Madrid's fleet during **23 months**: a total of **700.000 vehicles**, per year

SOFIA  
Fleet

1 RSD+ monitor Sofia's public bus fleet during **23 months**: a total of **150 buses**





9 months



public-private partnership

***DISCOVER VITOSHA MOUNTAIN ON A BIKE!***





***SAVE THE DATE***  
**12 APRIL 2019**



**SOFAIR**  
**EUROPEAN AIR QUALITY**  
CONFERENCE



European  
Commission



An aerial photograph of a multi-lane highway cutting through a dense forest of trees with autumn foliage. In the background, a tall, slender tower with a spire stands prominently against a sky with soft sunset colors. Mountains are visible in the far distance.

***THANK YOU!***

The Borisova Garden